

TRacer
User Guide
Blackberry V2.2

LEGAL USE NOTICE:

Total Recall, TRacer and SecureMe are applications designed to enhance the productivity of the device(s) the application(s) is installed on. Your use and or purchase of the aforementioned applications is your acceptance of our policy to only use the application(s) in a legal fashion, to obey your local laws, and your acknowledgment that you are aware of your local laws regarding each application's use. If you are in doubt, please contact your local law enforcement agency, or local legal counsel. Installation of Total Recall, TRacer or SecureMe must only be performed on device(s) for which you are the rightful owner, and under no circumstances are to be installed on a third party device, or a device for which you are not the owner.

Killer Mobile Software LLC will not be held responsible and accepts no liability for any unlawful or illicit use of any of its applications, and will use any technique available to prevent continued unlawful use including deactivation of the license or the remote web account where any data may be stored in the event a complaint is received.

Legitimate use can include: Device Anti-Theft & Security, Employee Activity Tracking, Data Backup, and Call Recording (where and when legal - consult your local one and two party recording laws) and Law Enforcement use.

Table of Contents

1 Introduction & Features	4
2 Installation	5
2.1 Installation using Desktop manager.....	5
2.2 Installation OTA.....	5
3 Registration	6
4 Settings	7
4.1 General Settings:.....	8
4.2 Manual BackUP:.....	10
4.3 Automatic Tracing/BackUp.....	11
5 SMS Commands	13
6 Web Server.....	15
7 Glossary	17

1 Introduction & Features

Tracer BlackBerry is a powerful device monitoring, tracking & surveillance application for BlackBerry Smart Phone devices. With Tracer you can Track GPS Location, Monitor conversations, Track SMS & Call Logs, View BBM (BlackBerry Messenger) Chats & Much More. All Data can be uploaded to our secure, private remote web panel, sent via Email (through our mailservers, not the device) or via SMS / TXT Message.

General Features |

- Discreet Running Application virtually undetectable even by tech savvy mobile users
- Automatically runs on device reboot
- SIM Change Alert (via SMS) on SIM change
- Responds to Remote SMS Commands (Invisible only if sent from the web panel)
- Monitor/Spy Call (Room Bug)
- Runs as a System Application for improved stability & invisibility
- Automatically restarts itself even when shut down by the OS

Data Types |

- Report Incoming & Outgoing Call Logs (Caller Number/Contact Name, Time & Date)
- Report Sent & Received SMS / TXT Message Logs (Sender Number/Contact Name, Time & Date)
- Report New Contacts
- Report GPS Location or Cell ID Details (when GPS is not available) that can be viewed on a map or sent as a Google Maps formatted URL via SMS. GPS can be reported at it's own set interval independent of the reporting interval
- Report Emails
- Report BBM Chats (BlackBerry Messenger Chats) - Currently supports English, Spanish & Portuguese versions of the BlackBerry Messenger App
- Upload Newly Taken Photos
- Upload Newly Taken Videos

Flexible Data Reporting/Uploading |

- Upload data to personal, secure remote web panel
- Send data to a preset Email Address
- Send data (except media) via SMS / TXT Message
- No Trace of Data/Email/SMS being sent
- Report Data in instantly Real time
- Report Data at a set interval (example: every 2 hours)
- Report Data at a scheduled time
- Report Data Manually via SMS Trigger
- "Black Box" feature - Allows you to store all data to a secret directory on the device and manually retrieve it later.
- Optionally "Geo Tag" SMS, Call Logs & Media data uploaded to the panel with the GPS location

Remote Features |

- Remotely trigger a Photo or Video via SMS Command (Mobile Surveillance)
- Remotely Trigger Audio Recording 100% discreetly via SMS Command (Remote room bug)
- Remotely Configure Settings from Web Panel
- Robust Set of SMS commands for general application interaction & configuration
- Remote Reboot of device

Web Panel |

- 100% secure & private with 99.99% uptime!
- View live GPS Details (when app is configured to do so) on a map, including past GPS history
- Search Chat & SMS Logs by Keyword
- Sortable Data
- Bulk Download Options
- 100 MB of Media Storage
- Send Remote SMS commands directly from the panel (First 5 messages are free)
- Set a GPS Leash/Fence for the target device and receive an SMS or Email alert when the device enters or leaves the area
- Panel can support multiple devices

2 Installation

Tracer can be installed either using the BlackBerry Desktop manager or OTA (over the air)

2.1 Installation using Desktop manager:

1. Download the required installation files to your desktop.
Once you have downloaded the desired application to your desktop, you may have to unzip/extract the contents to a new folder. Inside your newly created folder you will find a file that ends in .alx
2. Connect your BlackBerry via USB to your computer and launch the BlackBerry Desktop Manager.
3. In the menu you will see an option for "Application Loader". click this and you will see a screen appear that displays all the applications currently loaded on your BlackBerry.
4. Above the list of currently installed BlackBerry applications you will see a button that says "Add". Click on this button to bring up the add application dialog box.
5. Navigate to the folder that you have saved on your desktop in the previous step and locate the .alx file contained within. Choose OK and this application will appear in the list with all of your other installed software.
6. If you have downloaded multiple pieces of software to install, you can go ahead and click the add button again and navigate to the next .alx file and click OK. Repeat this process for each additional third party application you wish to install.
7. Once all desired applications have been introduced into the application loader, verify that they each have a check mark next to them and click the button labeled "Next" which appears below the list of applications.
8. You will see the BlackBerry Desktop Manager run through a process and your BlackBerry may restart.
9. Upon reboot of your BlackBerry you will see all of your newly installed applications on the applications screen of your device.

2.2 Installation OTA

1. Browse directly to the following URL's from your device browser

A | BBM Chat Tracker module: <http://copkoy.com>

B | TRacer Application file: <http://copkoy.com>

** It is critical that you accept the Trusted Application prompt as well as set ALL permissions to Allow for the TRacer application.

3 Registration

If this is your first time installing Tracer, it will give you a 3 Day trial period after which you will need to purchase a license for continued use. Registration process is simple and listed below

- 1 Open the app
- 2 Enter the Registration Code
- 3 Select Register button

You can enjoy the app for 3 days by selecting **TRIAL** option

For registered users, the application will check the registration status automatically upon startup. You may need to select a working access point.

**** Important Note ****

TRacer BlackBerry will not appear in the installed applications folder. To access the application when it is hidden you will dial the password (by default 555555) as you would a call.

For this to function properly the “Key Injection” or “Input Simulation” permissions must be set to Allow for the Tracer application. You can edit the application permissions by going to Settings -> Options -> Applications – Highlight the Tracer App & Press the Menu Key -> Choose “Edit Permissions”

4 Settings



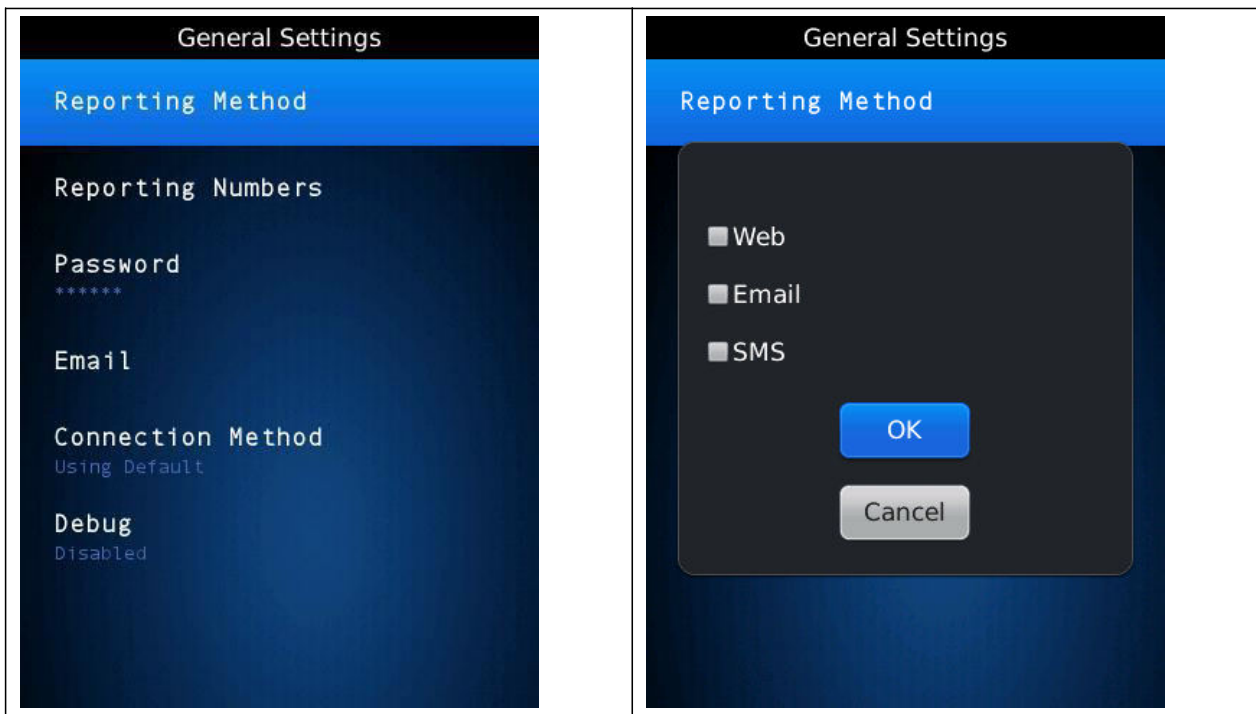
Auto Tracking: Allow you to enable or disable Automatic tracking from the home screen.

General Settings: Allow to set various generalized settings as autotracking, reporting methods, reporting number, password, email, connection method etc.

Manual BackUp: Allows you to Manually BackUp data to Web or email.

Automatic Tracing/Backup: Settings for indicating data types & settings for auto tracking

4.1 General Settings:



Reporting Method:

Web: Data is uploaded to Web

Email: Data Sent to email

SMS: Data (except for media) will be sent via SMS message

Reporting Number: Allows you to manually enter number for receiving Data as per set options. You can enter up to 5 numbers to receive data.

Password: Allows configuring password for security reasons. You will have to enter password for changing settings every time thus protecting app from unrestricted access.

Default Password is 555555

Email: Allows entering of email address. Entered Email address receives Data if selected in Reporting Method.

Connection Method: Allows selecting the connection method to send & receive data.

MDS – Connect using MDS option

Default - Connect using Default device option

BIS – Connect using BIS option

Direct TCP – Connect using Direct TCP

WAP 2X – Connect using WAP

Debug: If set to yes the application will create a running log to assist us in tracking down any issues you may encounter.

Log will be found in store/home/user/Tracer/Tracer.txt

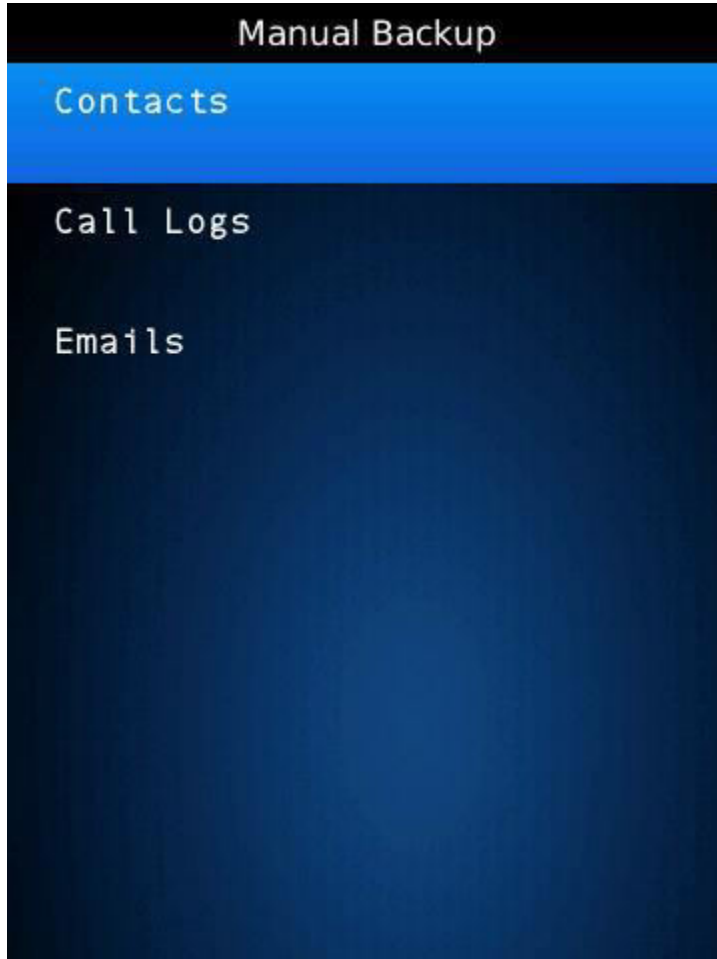
4.2 **Manual BackUP:**

App has feature to upload data manually to Web server or get it to your set email.
Select the Data to Manual Back Up.

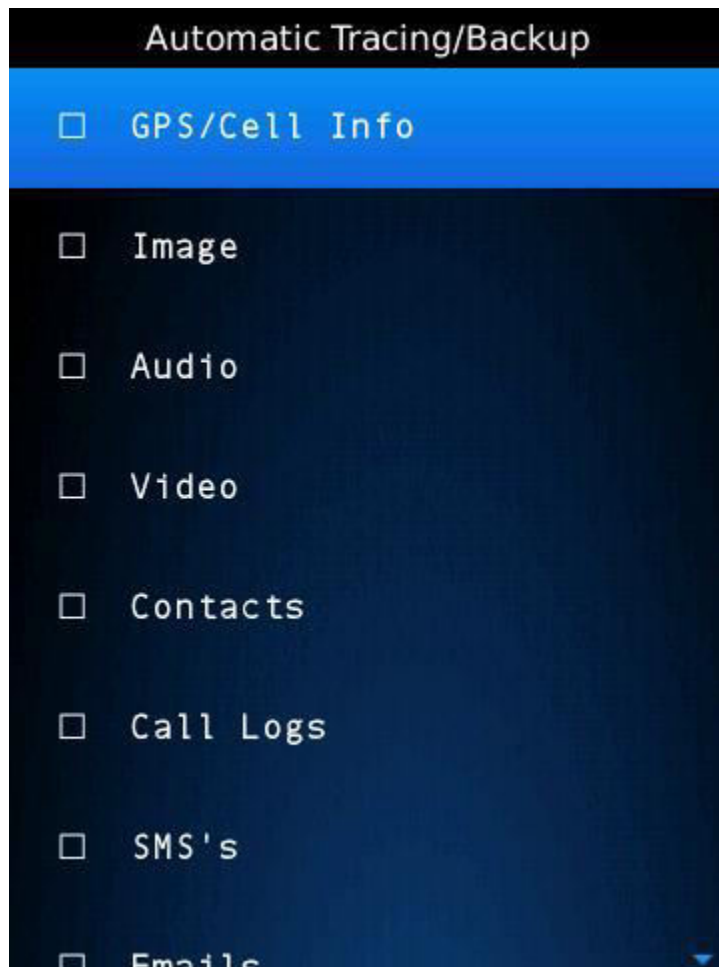
Select Contact to Backup all contacts

Select Call Logs to Backup all Call logs

Select Emails to Backup all Emails



4.3 Automatic Tracing/BackUp:



GPS/Cell Info:

Application sends GPS lat/long if GPS works otherwise it sends Cell info which includes Cell Id, Area Code, Network ID and Network name.

Image:

Application takes Camera Photo & uploads the same to server. You can set the photo interval as per your need.

Audio: Audio recording start at set interval. You can set upload interval as per your need. Audio duration needs to be configured in Duration settings

Interval – Upload interval to server

Duration – Audio clip duration.

Video: Video Recording Starts at set interval. Upload time can be set using "Upload Interval" option.

Interval – Upload interval to server

Duration – Video clip duration.

Contacts:

Newly added contacts will be reported per the data reporting settings.

Call logs:

New Call will be reported per the data reporting settings.

SMS:

SMS data (i.e. Incoming, Sent) reported per the data reporting settings.

Emails:

New Emails (i.e. Incoming, Sent) from device are reported per the data reporting settings. * Only Registered Device Emails are logged.

Chat:

BBM Chats will be recorded & uploaded per the data reporting settings.

NOTE: Chat will be recorded only if user is using the chat messenger during the set time and is on Chat window screen.

5 SMS Commands

Our Remote **SMS Commands** add additional functionality and flexibility both to the application itself and our remote web panel, including:

- ✓ GPS/Cell ID Location Info on demand
- ✓ Remotely trigger Photos and automatically upload
- ✓ Remotely trigger audio & video recording and automatically upload
- ✓ Remotely trigger contacts, call logs, emails recording and automatically upload

SMS commands are only received silently when sent from the web panel. Commands must be formatted exactly as indicated below and ARE case sensitive. Any additional parameter after the command (such as <interval> or <tries> or <monitor number> requires a space between it and the actual command.

Sample Command: ACT<password>EN = ACT555555EN

Sample Command with Parameter: ACT<password>GSE <INT> (5 Minute Interval) = ACT555555GSE 5

NOTE: Anything inside <> is mandatory while [] is optional. By default <password> is 555555

Enable Tracer | ACT<password>ENBL

Disable Tracer | ACT<password>DSBL

Upload Commands

Start uploading GPS to Web | ACT<password>GSWEB <interval>

Start uploading GPS through SMS | ACT<password>GSSMS <interval>

Start uploading GPS to Email | ACT<password>GSEMAIL <interval>

Stop uploading GPS | ACT<password>GSSTOP

Start uploading Cell Info | ACT<password>CIF <interval>

Stop uploading Cell Info | ACT<password>CIFST

Start uploading Video | ACT<password>SVID <duration> [interval]

Stop uploading Video | ACT<password>STVID

Start uploading Call Logs | ACT<password>UDCL

Start uploading Contacts | ACT<password>UDC

Start uploading Images | ACT<password>SIMG <interval>

Stop uploading Images | ACT<password>STIMG

Start uploading Audio | ACT<password>SREC <duration> [interval]

Stop uploading Audio | ACT<password>STREC

Data Tracking Commands

Start tracing Call Logs | ACT<password>SCL <interval>

Stop tracing Call Logs | ACT<password>STCL

Start tracing Contacts | ACT<password>SCTS <interval>

Stop tracing Contacts | ACT<password>STCTS

Start tracing SMS | ACT<password>SSMS <interval>

Stop tracing SMS | ACT<password>STSMS

Start tracing Email | ACT<password>SMAIL <interval>

Stop tracing Email | ACT<password>STMAIL

Start tracing Chat | ACT<password>SCHAT <interval>

Stop tracing Chat | ACT<password>STCHAT

6 Web Server

The data send from the tracer is uploaded to web server.

Address for the server: <http://copkoy.com>

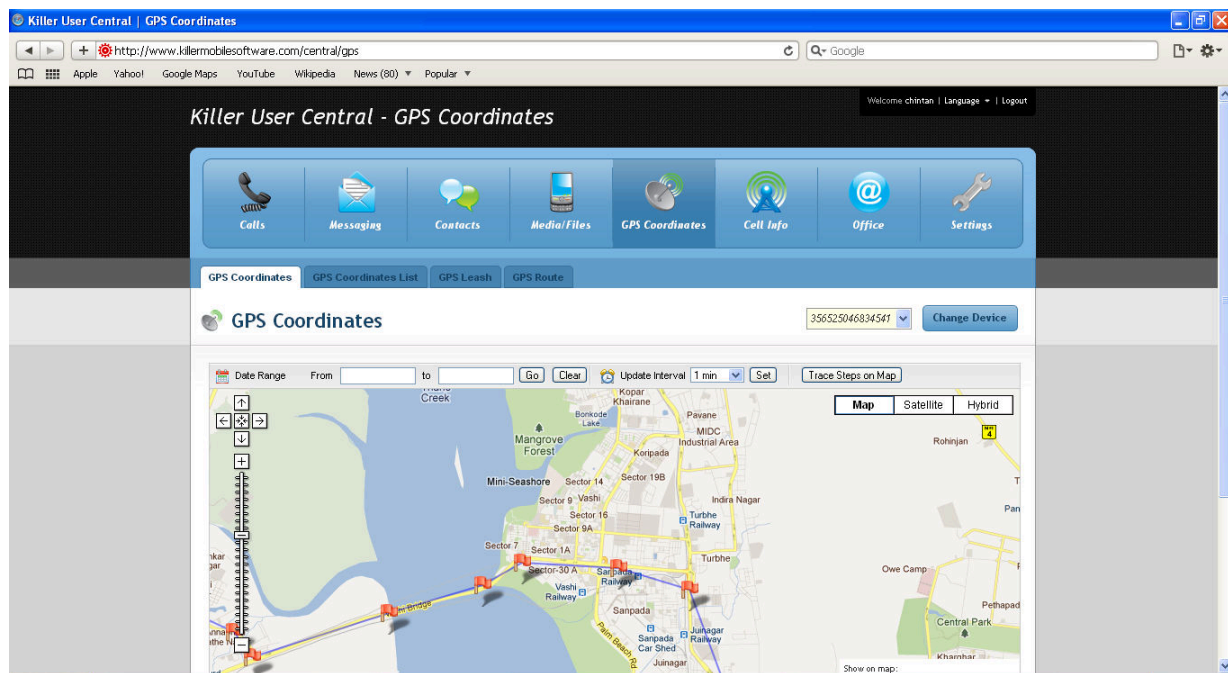
You require valid credentials for logging in web server.

App comes with default User ID & password.

Default panel login:

User = IMEI (Refer Glossary)

Pass = 555555



GPS Coordinates

The screenshot shows the 'Calls' section of the Killer User Central interface. It features a navigation bar with icons for Calls, Messaging, Contacts, Media/Files, GPS Coordinates, Cell Info, Office, and Settings. Below the navigation bar, there is a 'Calls Log' section with a dropdown menu for device selection (3562504634541) and a 'Change Device' button. The main area contains a table of call logs with columns for Date Range, Phone Number, Direction, Duration, Call Time, and Upload Time. The table includes a search bar and filters for All Calls, Incoming, Outgoing, and Missed. The data rows show various outgoing and incoming calls with their respective durations and timestamps.

Date Range	Phone Number	Direction	Duration	Call Time	Upload Time
	987684888	Outgoing	00:00:00	2011-08-30 23:24:10	2011-08-30 15:01:16
	9967350934	Outgoing	00:01:40	2011-08-30 21:40:23	2011-08-30 13:19:12
	9920317186	Outgoing	00:00:00	2011-08-30 21:39:35	2011-08-30 13:16:51
	9892789866	Outgoing	00:00:00	2011-08-30 21:38:30	2011-08-30 13:16:02
	+919320794877	Outgoing	00:02:01	2011-08-30 20:51:07	2011-08-30 12:30:21
	+919769373136	Incoming	00:00:15	2011-08-30 19:58:12	2011-08-30 11:35:48
	+919769373136	Missed	00:00:00	2011-08-30 19:55:51	2011-08-30 11:33:21
	+919769373136	Incoming	00:00:31	2011-08-30 19:49:32	2011-08-30 11:27:02
	+919221982437	Incoming	00:00:32	2011-08-30 19:44:51	2011-08-30 11:22:22
	+919930219705	Outgoing	00:00:16	2011-08-30 19:27:05	2011-08-30 11:04:47
	+919769373136	Outgoing	00:02:24	2011-08-30 18:42:25	2011-08-30 10:22:51
	9969022528	Outgoing	00:00:27	2011-08-30 18:40:43	2011-08-30 10:18:21
	9920388236	Outgoing	00:02:11	2011-08-30 17:16:25	2011-08-30 08:55:47

Call Logs

The screenshot shows the 'Messaging' section of the Killer User Central interface. It features a navigation bar with icons for Calls, Messaging, Contacts, Media/Files, GPS Coordinates, Cell Info, Office, and Settings. Below the navigation bar, there is a 'Messaging - SMS Log' section with a dropdown menu for device selection (723454327234565) and a 'Change Device' button. The main area contains a table of SMS logs with columns for Date Range, Phone Number, Folder, SMS Body, SMS Time, and Upload Time. The table includes a search bar and filters for All SMS, Inbox, and Sent. The data rows show various incoming SMS messages with their respective bodies and timestamps.

Date Range	Phone Number	Folder	SMS Body	SMS Time	Upload Time
	LM-HDFCBank	Inbox	An amount of Rs.222.00 has been debited from your acc	2011-08-22 10:09:30	2011-08-22 10:46:06
	Tata Docomo	Inbox	Dear customer, thank you for making an online payment	2011-08-22 09:08:22	2011-08-22 09:42:29
	+919878985343	Inbox	Ok	2011-08-22 17:24:26	2011-08-22 09:42:21
	Aireel-Etop	Inbox	Transaction number MUR110820001108200019 to recharge 10 INR is under process.	2011-08-19 18:25:00	2011-08-19 18:25:00

SMS Logs

7 Glossary

Registered Device Emails – Email configured in device from google account.

Real Time - The data is send real time using this setting

Interval - The data is send interval using this setting

Scheduled - The Data is sent as Planned using this setting.

GPS – Global positioning System

SMS Commands – Commands used for remotely triggering Application.

Web Server – Data server containing all data which is uploaded from device.

IMEI - The IMEI (International Mobile Equipment Identity) number of a mobile phone is a 15 digit number unique to a mobile handset. Just key in `*#06#` on your mobile phone and it will display its IMEI number in most phones

LEGAL USE NOTICE:

Total Recall, TRacer and SecureMe are applications designed to enhance the productivity of the device(s) the application(s) is installed on. Your use and or purchase of the aforementioned applications is your acceptance of our policy to only use the application(s) in a legal fashion, to obey your local laws, and your acknowledgment that you are aware of your local laws regarding each application's use. If you are in doubt, please contact your local law enforcement agency, or local legal counsel. Installation of Total Recall, TRacer or SecureMe must only be performed on device(s) for which you are the rightful owner, and under no circumstances are to be installed on a third party device, or a device for which you are not the owner.

Killer Mobile Software LLC will not be held responsible and accepts no liability for any unlawful or illicit use of any of its applications, and will use any technique available to prevent continued unlawful use including deactivation of the license or the remote web account where any data may be stored in the event a complaint is received.

Legitimate use can include: Device Anti-Theft & Security, Employee Activity Tracking, Data Backup, and Call Recording (where and when legal - consult your local one and two party recording laws) and Law Enforcement use.

ONLYSPY

QUERIES & FEEDBACK

If you have any additional support queries or feedback, please contact us directly at actionindia Delhi@gmail.com or use the technical support forums located at <http://copkoy.com>